



Content Management System

Developer Note

Configuring the live publishing environment

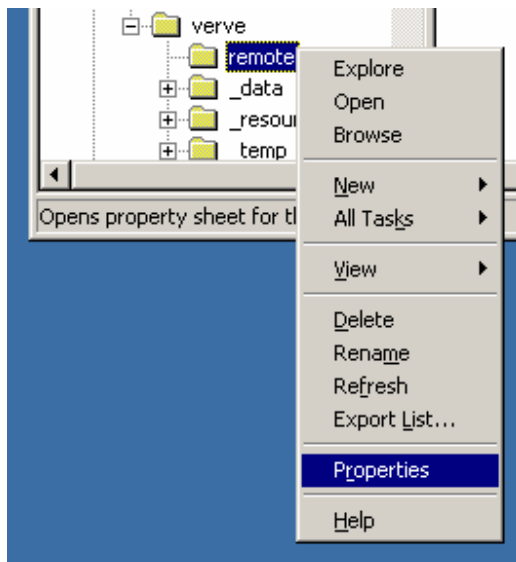
Version 2
October 18, 2006

By Ben Noblet

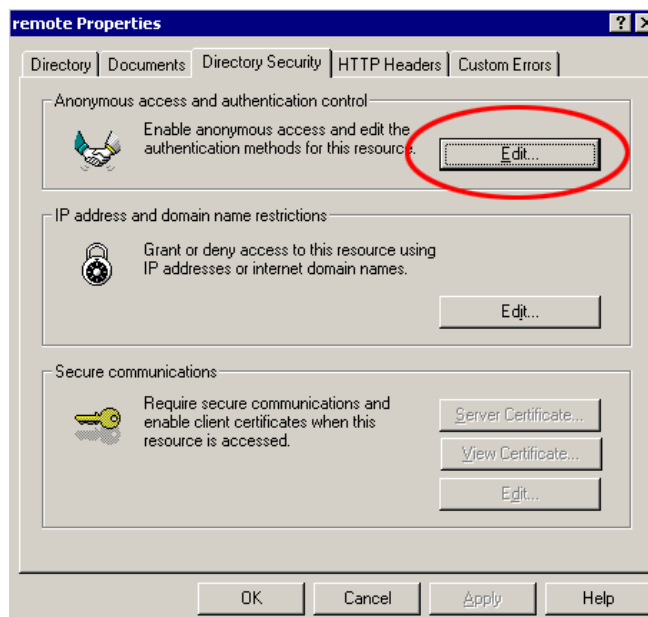
Background

Verve publishes new files and content using an HTTP post interface. To ensure that this interface is not misused to publish unauthorised content, hosting providers should follow the following instructions to configure the live web server(s)

1. Unzip the provided file “VerveAPI.zip” into the root of the web site folder.
2. Create a new Windows user on the web server (advise Lateral Systems of the username and password)
3. Grant this new user full permissions to the live web site root and all subfolders.
4. In the IIS Administration Console, open the web which represents the live site.
5. If in Windows 2003 right-click on the root and navigate to the “Home Directory” tab. Check that “Script Only” is selected for “Execute Permissions”.
6. Right click on the /verve/remote folder and select “Properties”



7. Click on the “Directory Security” tab and click the “Edit” button in the “Anonymous access and authentication control”



8. Uncheck "anonymous access" and uncheck "integrated windows authentication" and check "basic authentication"



Windows Server 2003

The following additional steps need to be taken due to the lower default limits of Windows Server 2003.

1. Stop the "IIS Admin Service" and "World Wide Web Publishing Service". At the command prompt:

```
net stop w3svc
net stop iisadmin
```

2. Open c:\Windows\System32\Inetsrv\metabase.XML in a text editor

3. Change "AspMaxRequestEntityAllowed" to "104857600"

4. Change "AspBufferingLimit" to "104857600"

5. Start the "IIS Admin Service" and "World Wide Web Publishing Service". At the command prompt:

```
net start w3svc
net start iisadmin
```

Additional Security

Optionally, an SSL certificate can be installed to encrypt all publishing communications. If you choose not to utilise an SSL certificate, the publishing process is still as secure as using the standard FTP protocol, which transmits the password details and conducts the session unencrypted.

Refer to the IIS documentation for information on generating and installing an SSL certificate. Once installed and configured, please notify Lateral Systems if you wish to utilise SSL for publishing on this web site.

Further information

For assistance, or to advise the username and password for a configured site, please contact us:

Email: support@lateralsystems.com.au

Phone: 02 8437 3564 (ask for Support Department)